

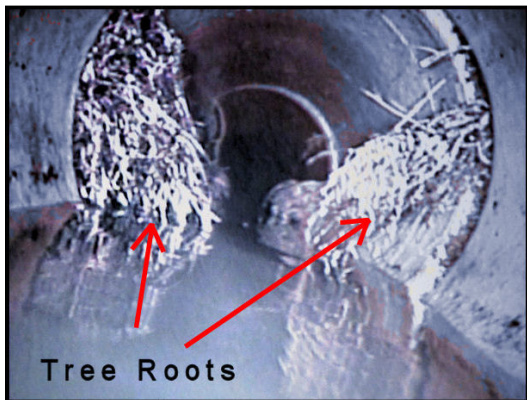
“Let Us Spy It Before You Buy It”

Mike Lamb’s INSPECTION CONNECTION, Inc. of Chicagoland

Why I recommend a SEWER TV SCOPE

Pre-1980’s Chicago area homes have clay sewer pipes beneath the ground in the front or back yard running to the main sewers in the street or alley. These clay drain pipes are usually 6 inches in diameter and are installed in 2 foot sections. And they leak.

The drain pipes are as old as the house and often have problems such as cracks in the clay, movement of pipe sections, and **tree root invasion**. Tree roots love sewer water and will go after and invade your sewers blocking them or tearing the pipe apart as they grow.



Clogged sewer pipes can cause flooding in the basement, OR at the lower grade level of multi-story condos and apartments. This is why I recommend a TV sewer scope of the underground sewer to each of my clients buying a house that is over 30 years old.

Watch my sewer TV scope YouTube video.

<https://www.youtube.com/watch?v=PDhSXCZJ5n8>

Installing a rod-out station in your yard so a plumber can rod out your sewer to keep it free from roots can be expensive. (\$2000-ish) If there is already a rod-out station there you can bet they have had past tree root problems. Newer homes may already have one installed.

A sewer TV scope will tell you what is necessary. It will also tell you if the entire drain/sewer in your yard is a disaster and needs complete replacement. A new sewer line run from your house to the street can run \$6,000 or more.

